

# HALLING VIEW

## Tis the Season!

*Change is in the Air*



A huge THANK YOU to the over 85 students from all the classes of Halling Primary School who submitted original, colourful artwork for this newsletter. We liked the entries! In fact, we are still trying to find a way to show case as many as possible in the future issues. Stay tuned!

With this 101<sup>st</sup> edition, a few changes have begun.

New Year's Resolutions include highlighting even more community events and issues in this publication. Short articles on Halling history or its natural environment or interviews with people who are shaping current developments such as the bridge across the Medway are just some of the possibilities!

If you would like to contribute to the editorial team, please call the Parish Council Office.

Your constructive and creative input would be greatly appreciated by our community.

Guest editor,  
Kevyn Wightman, PhD  
Councillor to Halling Parish

## NEWS YOU CAN USE

### Contents



Updates and Holiday Events from Community Organisations



School and PTA Updates



Messages from Vicar Roger and Pastor Kevin

*Adverts from local businesses*

## Halling Community Center, The Halling Parish Council and Halling Association

*Would like to invite all Halling residents to join us in the Annual Switching on of the Christmas Lights!!!!*

Join us on the 8th

December at 18:30

*Refreshments, A village choir and fingers crossed some snow 🌨️*

*merry  
Christams*



## Time for Remembering and Participating

As we reach the festive time of year once again it is time to reflect on the events of the past year. As you may be aware it has been a turbulent time for Halling Parish Council with the year starting off with a new Chairman and over the following months a change in the members of the Parish Council as we came to terms with the implications of the Localism Act 2011.

We continued the year with fresh ideas coming in from new members and requests from Parishioners to know more of what we are doing. In our quest to communicate more we have tried to embrace Social Media and some have suffered due to the pitfalls of this. We are currently re-launching the website to make it easier for people to use and also find out things that are going on.

As we continue to see the ever-changing face of our community with the start of the St. Andrew's Place development between Lower & North Halling, it is also time to reflect on our past. We have just had the annual remembrance of the people of our community who gave their lives fighting to uphold our civil liberties. For anyone who attended the ceremony in the church where the names were read out, it was obvious of the links to current residents who were related to these people.

Our most famous person who gave his life, Thomas Harris, still has family within this parish to this day, with younger members attending our Primary School. As we come to the 100<sup>th</sup> anniversary of the Great War in 2014 the government is looking to commemorate all Victoria Cross recipients with a paving stone. This got me thinking wouldn't it be a fitting memorial if that paving stone was placed to near where he lived within our community, for all of us to remember his bravery and the bravery of others like him. It is fitting to also remember that the events that happen within are community are also carried out by ordinary people giving up some of their time to ensure that all residents have the opportunity to enjoy a day out with their family (Fun Weekend), read about what's happening (Halling View), attend a club or organisation such as Halara, Brownies, Youth Club, Rainbows, Historical Society, Gardening Society and others.

Volunteers enrich our community – we can all extend a big Thank You to all those who provide fun, safe and creative enjoyment to many. Even better, be an active participant in some of the diverse activities and events! Everyone has something to contribute.

**I wish everyone a very festive Merry Christmas & a Happy New Year on behalf of the Parish Council.**

*Mark Joy, Chairman,  
Halling Parish Council*



### Join the Parish Council

We are a diverse team of volunteers working on behalf of local residents to improve the quality of life and local environment in Halling. All Parish Councillors receive free training by the Kent Association of Local Councils. Apply your skills, experience and initiative in shaping the dynamic future of Our Parish.

*Attend one of our monthly meetings and speak to one of us about exploring the opportunities, rights and responsibilities of a councillor.*

## Hello! Hola! Bienvenidos

This is the first time we've lived in a village and it has been lovely to wake up with a free-of-smog sky, have a jog by "the sticks", oh! and have your fresh milk delivered to your door! It's been over 4 months since we moved in and we are really thankful to God for the warm welcome we've had from neighbors, friends at the Community Centre and everyone at the local Chapel.

We had great fun at the "FW13 Fun Weekend", I've met great people at the badminton club (well... I've chickened out after I injured a tendon... you can tell I'm no Pro), my three little ones have made very nice friends at the park and youth club, and my dear wife has already learned how to make freshly-picked-berries jam and home-made cakes (oh yes)!!! It's been awesome to spend time with new friends who we are growing to love very much already. Thank you for the warm welcome.

I am the new Pastor at the Baptist Chapel in Vicarage Rd. I was born in Mexico to a British mother (so if you are about and want to practice your Spanish, come and say *Hola!*). At the age of 16 my life had a spin when I became a Christian while reading an old Bible. I've been passionate about Christ ever since.

As I was reading through the history of the Chapel, I've been so encouraged to learn that it always had an ever so well attended Sunday School (over 200 children were present in 1898!). We are happy to announce its re-launch in Spring 2014! So your children or grandchildren can follow your steps in the tradition of Sunday School too, learning Bible stories with crafts and fun games.

While speaking to some locals, I've noticed the great concern that some have about the loss of the Christian roots in our country, so I've decided to run the well received "Christianity Explored" course at my home, alongside a bite to eat and some tea, beginning in March. This 7 week course was written by the well known Anglican Minister Rico Tice (more info at [christianityexplored.org](http://christianityexplored.org)). If you have questions about life that have been bothering you for sometime, or simply curious to learn more about the Christian faith in an informal setting; whether you go to church or if you've never been, you are welcome to join us. If you have any questions or to register your interest, just give me a call.

**On behalf of my family in the faith at the Chapel, we wish you all a merry Christmas and a happy 2014! Everyone is welcome to join us for Christmas on Sunday 22nd at 11 am or Wednesday 25th 10 am.**

### Praying for the eternal good of Halling

Pastor Kevin Félix Hollington

5 Vicarage Rd      Mob. 0786 818 2423      Tel. 01634 924 973      [hallingbaptist.org.uk](http://hallingbaptist.org.uk)

## Fancy Learning a New Sport?

If so why not come along to the Halling Community Centre on a Tuesday or Thursday afternoon at 2pm or Wednesday evening 7pm and have a light-hearted try at Short Mat Bowls, we look on it as a social meeting with a game of bowls, a cup of tea/coffee and usually a good laugh. If you want a serious game we can do that too. To start with no equipment is needed as we have spare bowls, only proviso is flat shoes or slippers. If you play bowls outdoors in the summer and are looking for something to do in the winter come and join us.

For more information telephone Len Sharpe on 01634 244605



### Halling Friends and Neighbours!

Thank you for raising £658.49 on Nov 15 for **Children in Need**. Your generosity is greatly appreciated!





**Halling Residents Association**

# **Christmas Market Festival**

Sunday 8th December 10am - 3pm  
At  
Halling Community Centre



and after



at the Homeward Bound Pub, High Street, Halling  
for DISCO and all day HOG ROAST

Festival to include- Photos with Santa by Clare Joyce Photography, Up to 30 Christmas Market Stalls, Face Painting, Kids Craft, Toys, Doggy Stockings, Cakes, Mulled Wine, Raffle, Christmas Choir, singing from the children of Bo Peeps Pre School & much more.

*Fun For All The Family*

Designed by Kieran J publicati

## **Santa's 2013 Visit to Halling**

Santa and his elves will be making their annual trip on Friday 13<sup>th</sup> December from Upper Halling through to Lower Halling starting at approximately 4.00pm. Please note: As we can no longer take the sleigh into closes and cul-de-sacs of less than 20 houses, you will have to meet the sleigh at the end of your close. If you live in Lower Halling it is likely that we will get to you after 8.00pm. If you would like Santa to deliver a present to your child, please provide the following:-

- a wrapped present **clearly marked** with the child's name and delivery address
- the amount of £3.00 for 1 child, £5.00 for 2 children, £7.00 for 3 children, £1 each for any extra children.

A member of the PTA will be in the entrance hall at Halling Primary School from 2.30pm until 3.30pm from Monday 2<sup>nd</sup> December until Friday 6<sup>th</sup> December. PLEASE NOTE: Presents can only be accepted during these times – please DO NOT ask school office staff as they will be unable to assist.

Presents must be at the school **NO LATER** than Friday 6<sup>th</sup> December 2013 as they then need to be sorted and boxed ready for the sleigh run. Presents must be small, not fragile, heavy or bulky etc.

The sleigh run is organised **ENTIRELY** by the members of the Halling School PTA who give up their time to organise and run it for the residents of Halling.

Thank you for your continued support in making the sleigh run so successful and don't forget to put your loose change into our collection buckets as we make our way through Halling!

**Wishing you a Merry Christmas  
&  
A Happy New Year  
Santa, the Elves and the Halling  
School PTA**

## Where should I put them?

I have just taken delivery of two die cast models – a Supermarine Spitfire Mark I and a Messerschmitt 109, representing the aircraft that fought in the Battle of Britain – though, in fact, there were more Hurricanes than Spitfires in the skies in 1940.

I have a personal soft spot for the Spitfire because my first flight ever was in a two seater Spitfire – second prize in a raffle at RAF Manston, for which I didn't even have any tickets, but that's another story. It was quite something to fly out over the channel in a Spitfire and return to Manston over the White Cliffs of Dover.

While I was officiating chaplain at Manston, I was also chaplain to the Ramsgate and Broadstairs branch of the Royal Airforce Association. The duties included preaching on Battle of Britain Sunday – the Sunday on or following Battle of Britain Day which is 15<sup>th</sup> September. We would follow the service with a parade through the town led by a marching band and civic and RAF dignitaries to our club house where we enjoyed a few drinks and a reception. It would be my job to cycle on ahead and form a one man welcoming committee – not so much *after the Lord Mayor's Show* in front of it.

Having to preach on this occasion annually made me very sensible of what the Battle of Britain means for us. When Hitler marched into Poland in 1939, the allies had no alternative but at last to declare war. A British Expeditionary Force was despatched to France and at first so little happened that it was referred to as the phony war. In May 1940, however, the Germans invaded the Low Countries and France, the French Army surrendered and the British Army was evacuated from Dunkirk. The next logical step was Hitler's proposed invasion of Britain – Operation Sealion. In order for this to be successful he needed control of the English Channel, which the Royal Navy and the RAF had to prevent at all costs. There followed the Battle of Britain in which the Luftwaffe attempted to bomb our ports and airfields and also our munitions factories and civilian population in the

Blitz. Fighter Command had to stop them and, over the long Summer of 1940, eventually succeeded in repelling the waves of German bombers so that Operation Sealion had to be cancelled and Hitler made the disastrous mistake of invading Russia.

It is almost certain that if the Battle of Britain had not been won, Germany would have had victory in the Second World War and the whole of Europe (like Poland in 1939) would have been divided up between the evil regimes of Nazism and Stalinism. So it is right to be thankful for that victory. It is also right to honour the extraordinary courage of the fighter pilots who took off on mission after mission, knowing that casualty rates were high and that living with horrific injuries was as much a possibility as sudden death. It is also right to remember other service personnel and civilians who all played their parts and the general population who endured the Blitz with a fortitude which no one had anticipated. It had been thought that civilian populations would capitulate under sustained bombing, but this has not proved to be the case. Human beings are more resilient than we appear.

But what to do with these fine models in my all already cluttered Rectory? The first place I tried was on top of a cupboard in front of a picture of Jesus and the apostles at the Last Supper. I had to move them. It seemed so wrong to display implements of war in front of that scene. Probably there are occasions when war is unavoidable and, as well as bringing out the worst in us, the challenge of armed conflict can bring out the best in human beings – courage, fortitude, endurance, loyalty, self-sacrifice –but war is never a good thing. It is not how things are meant to be. There is a more excellent way – the way of love – a way which we should never cease to seek in this world of sin and grief. Jesus is the Prince of Peace and it is for His Kingdom that we long.

My fighter aircraft models are now on the other side of the room. The picture and the models both have their honoured place but my ultimate allegiance can only be to the One Who gave His life for the sins of the

## Christmas Services

### St. Michael & All Angels Cuxton

22<sup>nd</sup> Dec 6.30 pm Nine Lessons and Carols

24<sup>th</sup> Dec 5.00 pm Crib Service, Nativity Play & Christingles

11.00 pm Midnight Mass

25<sup>th</sup> Dec 9.30 am Family Communion

### St John the Baptist Halling

22<sup>nd</sup> Dec 3.00 pm Crib Service, Nativity Play & Christingles

25<sup>th</sup> Dec 8.00 am Holy Communion



## The Great British Bake Off!

**What's new about that?** We have had classes for this and other domestic skills in our Shows for the last 35 years! We even provide our well-tested recipe for you to use at each event!

And this is only part of the traditional skills that we encourage at the **HALLING GARDENING SOCIETY**. Flower arrangers and children's classes are included so that everyone can take part. Those of you with a few tubs on your patio, a garden or even an allotment can join in the friendly rivalry by exhibiting at our shows in April and September.

**Not sure that you are up to the standard?**

Anyone can win and novices often do on their first attempt (with help given to set-up). Come along and visit a show or find us on Facebook to see what our events look like.

Other benefits include free entry to our events, occasional talks, garden visits and 40% off seeds from Dobies catalogue (15% off all other items). Plant swops allow everyone to benefit from those with green fingers and our auctions can bring the house down with fits of laughter!

All this and it will only cost you £3 per year to join.

Ring now for a catalogue and show schedule from Matthew on 01634727424 or Pat on 01634240480.

## Are you over 50 with time on your hands?

Halling ACTIVE Retirement Association (HALARA) is not all "Old People" as you may believe it to be. We may be getting older in years, but our minds and bodies are still Active, maybe not quite as active as they were but still given the chance we can keep ourselves on the go. We meet once a month at the Jubilee Hall, Upper Halling, on the last Friday of the month, where we can enjoy a cup of tea and a chat plus a raffle, some months we have a Speaker which are always very interesting and informative and sometimes very comical, other months we may have a cream tea with in-house entertainment from some of our more talented members, or we may have fish and chips and a few games of bingo or a quiz (this finds the members with the more active brains!).

Weekly activities include Short Mat Bowls at the Community Centre, Tuesday and Thursday afternoons, and we are trying to introduce Wednesday evenings for those people who cannot manage afternoons, (also open to non members). Coffee mornings are held the Community Centre Thursdays. Sequence Dancing at the Jubilee Hall each Friday, apart from the last Friday of the month when we have our meeting.

Once a month we enjoy a walk (maybe not a ramble – more an amble) followed by a pub lunch, if the weather is against us we forget the walk and just go for the lunch! We also hold games afternoons.

**During the year we arrange various coach outings, a Christmas Dinner with entertainment and a Bowls Section presentation evening dinner and dance.**

Each year we have a charity that we support. This year's is Demelza House Hospice. Last year was the local Halling Primary School Library, and we had presented them with £1,700, which has been spent on new books.

Annual membership is only £5. We are open to suggestions for other activities. **Come and give us a try!**

Phone Mrs. Ann Graves, 01634 - 246 004 or Mr .Norman Head, 01634 - 240 889

## WELCOME !



### PCSO DAN LEE

"As the new local PCSO for Cuxton & Halling my aim is to be a local contact for anybody in the area that would like to bring any issues to my attention that I can work on to help you feel better about the community you live in.

I am in the area to be a visible Policing presence and hope to speak to as many members of the Halling community as possible."

### Police Contact Point

- To discuss any policing issues
- Get expert advice on crime prevention
- Have your say on Policing in Kent
- Free property marking kit

**Thursday 5 and 19 Dec  
12 pm – 1 pm**

Halling Community Centre  
High Street ME2 1BS

For Future Dates & Info  
See [www.kent.police.uk](http://www.kent.police.uk) "

## Celebrating the Harvest at Halling School

On Thursday 17<sup>th</sup> October, the children at Halling School celebrated the Harvest Festival with a performance to parents in the school hall. Each class performed a short piece ranging from songs to poetry to "Let's Get Tasting!" The morning was enjoyed by all and the important message of thanks and celebration was a key feature of event.

Our very-generous parents donated many packaged and tinned goods that were made into Harvest Gift Hampers by some Year 6 helpers. These were given to older members of our community nominated by the children themselves. As always, we have received some delightful messages of thanks from the recipients.

It is very important for our children to understand the way that the harvest played such a pivotal role in the lives of their forebears. The school is fortunate to hold many artefacts including school log books from the very early days of the first Board School in the village. Entries include reference to times when the school was closed for the day because most children were expected to help to gather in the harvest.

July 21st 1912 *The attendance very poor this week in consequence of several of the scholars being engaged in pea-picking.*

September 29<sup>th</sup> 1912 *Re-opened the school on Monday, number present 54. A great number of the children are still engaged in hop-picking.*

How different from today when children are used to seeing their food packaged and labeled from the supermarket! It is interesting to note that the new National Curriculum for Key Stage 2 (juniors), from September 2014, includes the need for children to understand the seasonality of foods and to know where and how a variety of ingredients are grown, reared, caught and processed.

### BOOK DAY

In our continuing efforts to promote reading for pleasure, the school held a Book Day on 21<sup>st</sup> October. Children and staff dressed up as their favourite book character and we had many inventive and wonderful costumes! We had a visit from a storyteller, Raggedy Jack, who spent time with each class throughout the day.

We are very pleased that nearly one hundred of our children completed *the Great October Reading Challenge*. This involved completing some kind of reading activity every day throughout the month e.g. read a story to someone younger than you; go for a walk and read every sign post that you see; read a poem; read the television pages from a newspaper or magazine and plan your viewing. All children who completed the challenge were entered into a prize draw and will also have a special treat as a reward.

We recently had a one-day visit from OFSTED as part of a survey of the teaching of reading in Medway schools (ten schools were inspected). I am very pleased with the outcome, which reflects all of the positive changes at the school over the last couple of years.

## Roll Up Your Sleeves and Join Us for Tidy Ups, Planting, Pruning & More



Our informal volunteer group started because of concern about one of the most visible areas in Halling, the newly restored Bishop's Palace grounds.

Throughout Medway, over 25 "Friends Groups of Green Spaces" work on projects in parks and streets with Council support through the "Community Engagement Framework" (see their web page for details). Medway Council has hundreds of green spaces to maintain, but Volunteer Groups are vital in giving these areas the extra TLC. Basically, local people are best at keeping their local Green Spaces safe, clean, attractive, and accessible to all (including wildlife!).

We simply want to turn words into deeds for Halling's Green Spaces. And just maybe we will cultivate civic spirit through practical outdoor actions such shrub & tree trimming, leaf raking, litter picking and tree and flower planting.

Sites include Bishop's Palace, Medway River Front, Forge Green, Village Halls, White Pit and roadside verges. We hope to coordinate and collaborate with other community, educational and statutory organizations.

Thanks to the many helping hands during our first three task days!

### Next Task Day

Sat Jan 18 at Bishop's Palace 10 am – 1 pm, rain or shine



Halling Rainbows celebrated six years this year, unbelievable that I started this back in 2007. Some of the girls from then are now Guides!

This year we have been following the World Rainbows Roundabout and have learned about many places, from Ireland with Apple Blossom Sunday to Australia with Cuddly Koalas and up to Native America with Dream Catchers.

Six of the Brownies went on Pack Holiday at the beginning of May to Paxwood. They had a fab time learning and making things and all gained their cooks badge. Also, the whole pack has just achieved the Brownie Traditions badge.

The guides are growing in numbers and spent a very wet weekend camping in August at Paxwood. They do so many activities and recently enjoyed a visit to Larkfield Leisure Centre.

Maggie Palmer, 07548152191  
[bluebellpalmer@aol.co.uk](mailto:bluebellpalmer@aol.co.uk)

## Hall Hires in Halling: Jubilee Hall and Community Centre

Two great venues to choose from for your next birthday or anniversary party, meeting, jazz concert, play, table top sale, sporting or religious event, etc. For more information contact  
 Rona Church, Community Centre, Tel 01634 243455, [mikeandro@btinternet.com](mailto:mikeandro@btinternet.com)  
 Joy Oliver, Jubilee Hall, Tel 01634 242933, [joy.oliver@sky.com](mailto:joy.oliver@sky.com)

See photos, terms and conditions at web site of each hall  
[hallingjubileehall.btck.co.uk](http://hallingjubileehall.btck.co.uk)      [hallingcentre.btck.co.uk](http://hallingcentre.btck.co.uk)

## Other Club Contacts in Halling

*Your club could be included here next time!*



**Bo-Peeps Pre-School:** Jackie Tickner and Jane Adams [bopeeps@fsmail.net](mailto:bopeeps@fsmail.net)

**Zumba:** Julie Aylett  
[Julie.Aylett@southeastwater.co.uk](mailto:Julie.Aylett@southeastwater.co.uk)

**Karate:** David Knight  
[davidnorthkentkarate@hotmail.co.uk](mailto:davidnorthkentkarate@hotmail.co.uk)

**Badminton:** Clare French  
[clare1french@hotmail.co.uk](mailto:clare1french@hotmail.co.uk)

**Duets Dance School:** Hayley Mann and Julie Frost  
[duetsdanceschool@yahoo.co.uk](mailto:duetsdanceschool@yahoo.co.uk)

**Slimming World:** Sharon Sbrochi  
[ssbrocchi@aol.com](mailto:ssbrocchi@aol.com)

**Youth Club:** Paula Wilkins-Smith and Les Hitchcock  
[la.hitchcock@btinternet.com](mailto:la.hitchcock@btinternet.com)

## FREE COACHING OFFERED

Another big THANK YOU to my clients past and present who have helped me to get where I want to be. As many of you know, I currently hold a diploma in NLP, Life Coaching and Clinical Hypnotherapy. I am just about to submit my project work to upgrade this to a Masters Certificate. For just a little while longer I will continue the free service offered above.

So, allow me to continue to help you with any of these issues; confidence/ phobias/ motivation/ weight/ anxiety/ stress/ time management and many, many others. In fact anything you can think of! INTRIGUED? contact me: BEVERLEY, 01634 240190 or at [beverleyann.wdd012@gmail.com](mailto:beverleyann.wdd012@gmail.com) Please leave your name, CONTACT number, & a brief outline of your issues. Fully insured/ CRB checked. Full confidentiality observed.



## WHAT'S ON GUIDE TO HALLING THIS CHRISTMAS

Friday 13th - 8.30-11pm. LIVE MUSIC from 'The Shed' @ The Five Bells

Saturday 14th - 7pm. Members Night - 'THE SPARKLE LEE SHOW' @ The Newtown Social Club. Members free. Guests £10 (caution contains adult humour)

Friday 20th - 7.30pm. Senior Citizen's Christmas party @ The Newtown Social club. Invite Only.

Saturday 21st - 1-3pm. Santa's Grotto @ The Five Bells. All welcome. £1.50 per child, goody bag included.  
3-6pm The Five Bell's Christmas Raffle Draw and Festive LIVE MUSIC from Bravado.

Sunday 22nd - 2-4.30pm. Children's Christmas party for member's Children and Grandchildren @ The Newtown Social club. The Club Christmas Raffle will be drawn at 6pm.

Monday 23rd - 7.30pm. Wine, cheese and chocolate tasting @ The Five Bells, courtesy of the Biddenden Vineyard. PPP. Limited Spaces. Booking Essential.

Christmas Eve - 7-12pm. Family Disco @ The Newtown Social Club.  
7-11pm. Festive nibbles, mulled wine and free jukebox @ The Five Bells

### Boxing Day Opening Times

The Homeward Bound 12 - 8pm

The Five Bells 12 - 4pm

The Newtown Social Club 12-10pm, LIVE MUSIC 4-7pm from 'Wasted Aces'

Lower Halling Post Office 5.30am-1.30 pm

Best One Convenience Store- 5am - 2 pm

Halling Surgery - closed

### New Years Eve Opening Times

The Five Bells 12 - 4 pm then 7-1 am

The Homeward Bound 12 - 4 pm then 7-1 am

The Newtown Social Club opening at 12 noon. Disco 8 pm - late

Lower Halling Post Office 5.30 am -7.30 pm

Best One Convenience Store 5 am - 7.30 pm

Halling Surgery - 8.30 am- 1pm then 3.30 pm - 8pm



**Halling Youth Club**

**Christmas Party and Disco**

**20 Dec 7 - 9 PM**

**Community Centre**

## Attention Halling View 2014 Contributors & Advertisers



This publication is made possible through funding by the Halling Parish Council and advertisers. Every effort is made to ensure accuracy and to meet planned deadlines.

To include your contributions in the next issue, please note the deadline is

**15 Feb for 1 March publication**

Articles about community activities are gladly accepted. Formatting guidelines will also be published on the Halling Parish Council web site.

Please also consider adding your activities to **the New Community Calendar** at [www.halling-pc.co.uk](http://www.halling-pc.co.uk)

All articles may be edited for clarity, and failure to adhere to guidelines or deadlines for both adverts and articles will result in their exclusion.

All adverts must be paid in advance or they will not be included. If your advert does not appear in this edition, it is because you did not pay the invoice you were sent some time ago!

Please send entries to:  
Clerk to Halling Parish Council  
[hallingclerk@btconnect.com](mailto:hallingclerk@btconnect.com)

Du4Accounts



Need help with your on-line Tax Return?  
 Don't know where to start with your Self Assessment?  
 Object to paying hefty Accountants fees?  
 Let me help you!

Book-keeping & Accountancy services provided  
 Over 15 years of book-keeping experience!  
 Call Carol now!

01634 244807 or 0776 535 1064

Email: Du4accounts@btinternet.com



SNODLAND



## BEANEYS MEDWAY BAKERY AND TEA ROOM



FRESH BREAD - CAKES - PASTRIES  
 HOT SAUSAGE ROLLS - PIES - PASTIES



DELIGHTFUL CELEBRATION  
CAKES



MEDWAY 240253



## Perfect Solutions

**We are a small family run business with over 25 years  
 experience to cater for all your flooring needs.**

**No job is too big or too small.**

**All carpets and vinyls supplied and fitted including gripper and  
 underlay. We can also do a 'fit only' service if you've already got your  
 flooring.**

**Please call for a free, non-obligatory quotation.**

**137 High Street, Halling  
 07868 703954**

**Steve Tilbury**



## Count Campbell Accounts

...Self Assessment need to fly off soon?  
 ...Boxes/ bags of receipts to be transformed into  
 accounts?  
 ...Need to get your teeth stuck into VAT returns?

**Count on us.....  
 we won't bleed you dry.**

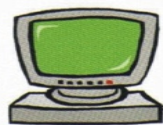


150 High Street, Halling,  
 Rochester, ME2 1BZ

Tel: 01634 246 013  
[www.ccaccounts.co.uk](http://www.ccaccounts.co.uk)

Member of Association of Chartered Certified Accountants





# SASHDODDCOM



## Computer and Laptop Repair Services



**Non-Working Keyboards, Flickering Displays, Cracked Screens, Broken Power Input Sockets All Fixed**



**Custom Built Computers, Using GENUINE Microsoft Software**

**Trouble Shooting, Upgrades, Virus and Spyware Removal, Broadband and Wireless Setups, Home Networks, and More...**

**Reasonable rates, No call out fees, Times to suit you, including Evenings and Weekends**

Call Sacha on 01634 249454, Or email [sacha@sashdodd.com](mailto:sacha@sashdodd.com),

Or visit my web site at [www.sashdodd.com](http://www.sashdodd.com)



**Sacha Dodd, 22 Low Meadow, Halling, Rochester**



26

## SMParsons

**Electrical Contractor**

**Domestic & Commercial**

**LOCAL FRIENDLY SERVICE**

**Established 20 Years  
NIC Part P Qualified**

**Contact Scott Parsons**

**Mobile: 07866 723766**

**email:**

**[smparsons1@hotmail.co.uk](mailto:smparsons1@hotmail.co.uk)**

## NEEDLE MAGIC

**Alterations &  
Dressmaking  
By**

**Nuti Roebuck**

**22 Chillington Close  
Upper Halling  
Rochester  
Kent  
ME2 1JX**

**07886 193362**



**Halling Osteopathic Clinic**  
2 Ashby Close, Halling, Rochester, Kent ME2 1DF  
01634 244367 / 07737 795493

Do you suffer from any of the following:-

Back & Neck problems  
Frozen Shoulder  
Tennis Elbow  
Sciatica  
Hip, Knee & Ankle problems  
Repetitive Strain Injury  
Sports Injuries  
Whiplash  
Migraine  
Poor Posture  
Changes to Posture in Pregnancy  
Stress/Tension

Sports Massage & Acupuncture also available

Madeleine Johnston-Standley (B'ost)



## DAVID TAYLOR

**Plumbing/Heating Engineer**

**ACS APPROVED**

**Boilers Serviced, Central Heating  
Bathrooms etc.**



**07971 528465**

**01634 725738**

**FREE ESTIMATES**



# COURT FARM COUNTRY LARDER

FARM SHOP  
Upper Halling

- Naturally reared beef and lamb from here at Court Farm.
- Quality locally sourced pork, free range chicken and eggs.
- NEW! - fresh fruit and veg from Oaks of West Malling.
- Award winning home made sausages and pies.
- Loyalty scheme – earn 50p when you spend £10 or more.
- NEW! – now selling sweets and chocolate plus grocery items: rice, pasta, tins, milk, butter, teas and coffee etc.
- Plus Solley's icecream, Jo's cakes, Owlet's juices, speciality jams and preserves plus local art and crafts.

For more information visit [www.courtfarm.org](http://www.courtfarm.org)  
or join our facebook page 'Court Farm Butchers'  
Tues & Wed 8am-5pm. Thurs & Fri 8am-6pm. Sat 8am-5pm  
Sunday 9am-1pm



Additive Free Husbandry No Growth Promoters You Know where its from



## Satori Spa



For your local beauty treatments in a relaxed, homely environment at Rainbows End Sundridge Hill Cuxton

- \* Spray Tans
- \* Nail Enhancements (Acrylic, Gel & Fibreglass)
- \* Bio Sculpture Gel Nails
- \* Facials
- \* Massage
- \* Reflexology
- \* Shrinking Violet Inch Loss Bodywrap
- \* Manicures and Pedicures (including Shellac)
- \* Waxing (including Brazilian and Hollywood)

For full details of the treatments we offer along with an online booking facility, please visit our website at:

[www.satorispa.co.uk](http://www.satorispa.co.uk)

Or contact us by phone on 01634 710333 or 07778 770314 or e mail at [info@satorispa.co.uk](mailto:info@satorispa.co.uk)

